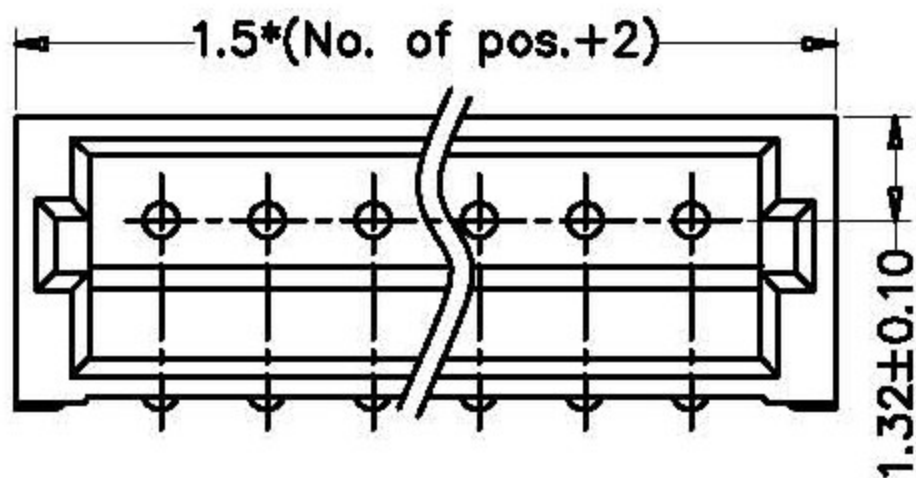
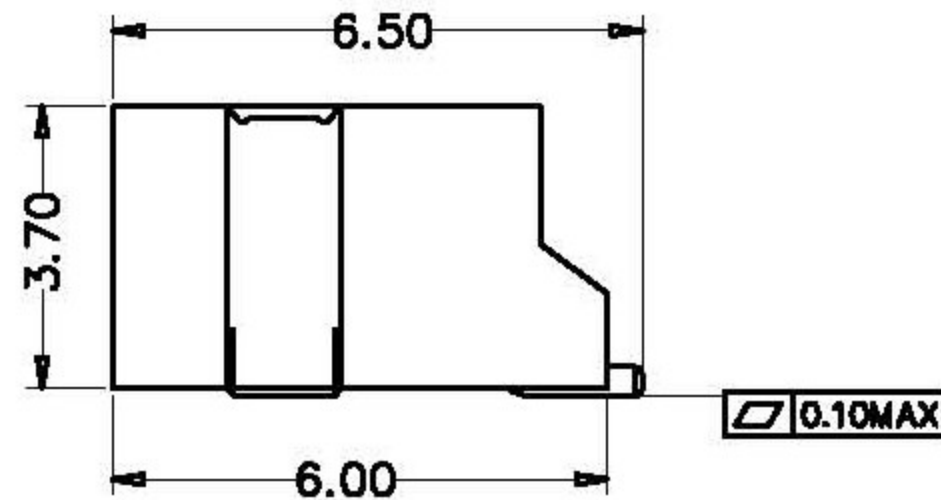
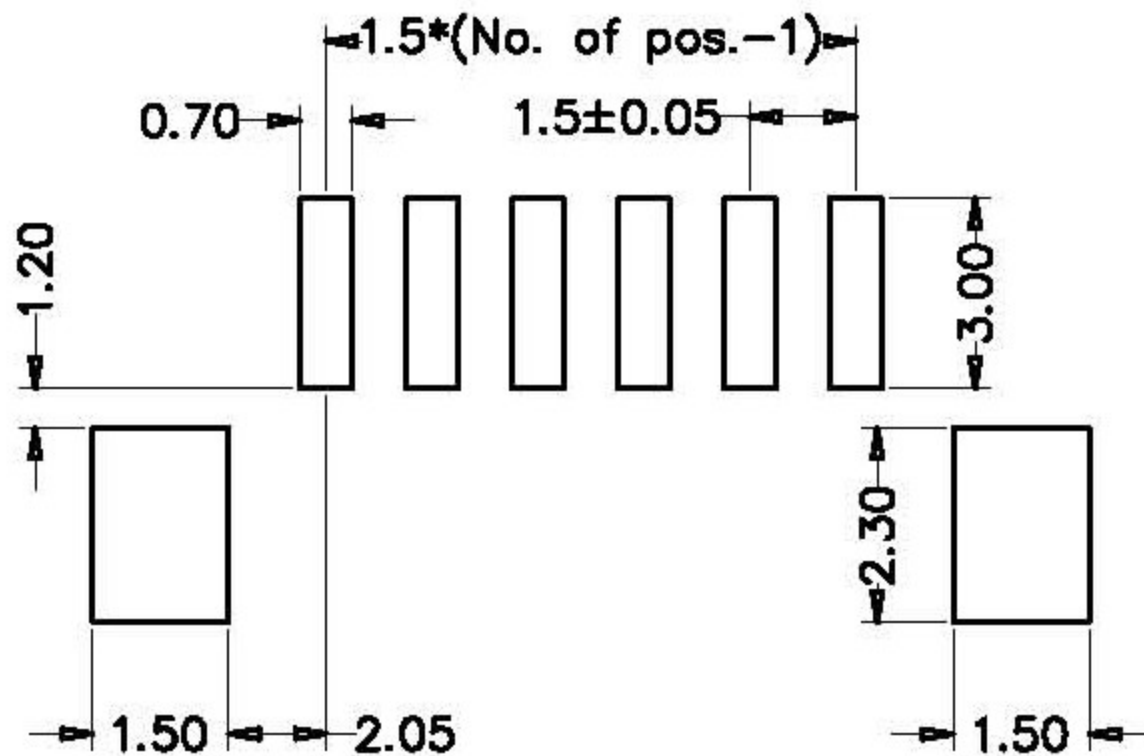
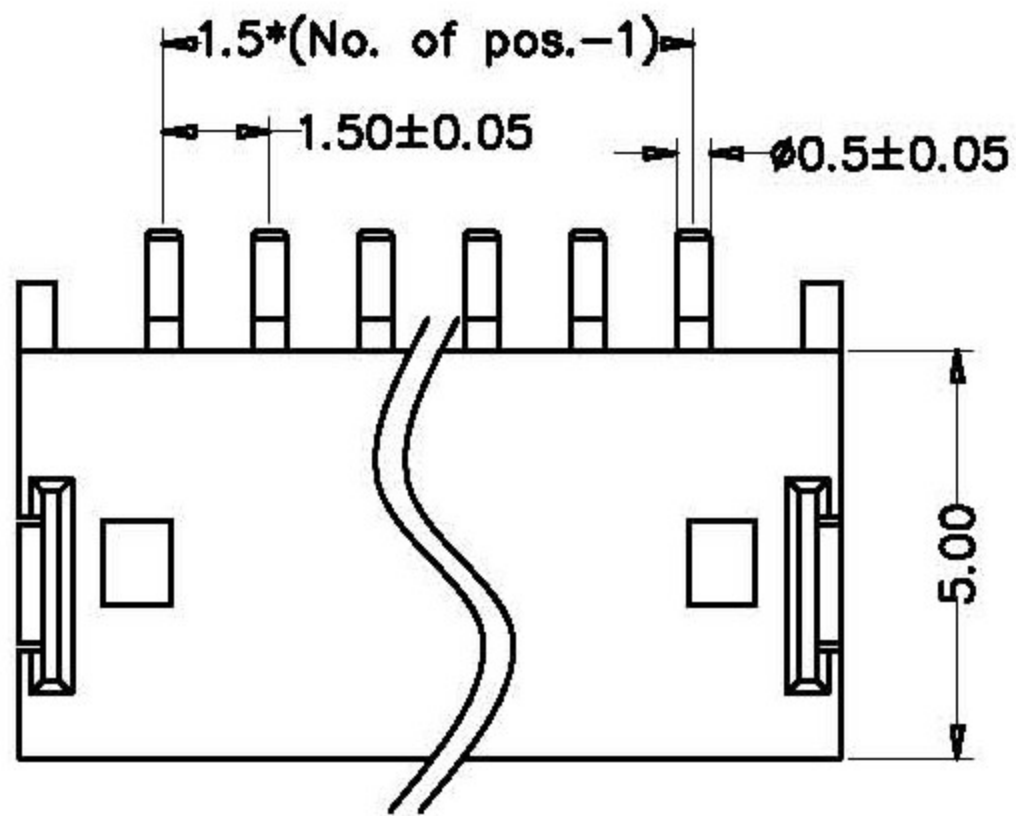


# RoHS

## SPECIFICATIONS

Current Rating:	1 Amp
Insulator Resistance:	500 Megohms min.
Dielectric Withstanding:	AC 800V
Contact Resistance:	20 $\Omega$ megohms Max.
Operating Temp.:	-25°C ~ +85°C
Max processing Temp:	230°C for 30~60 seconds (260°C for 10 seconds)
Insulator Material:	PA-46 (UL94V-0) ROHS
Contact Material:	Brass
Plated (*Standard):	Tin Plated



### Recommended P.C.B Layout

立原科技有限公司 Easy Show Technology Corp.		Title: wafer Pitch 1.5mm 90度, SMD Type	
Tolerances		App. Dabbie	Units <input checked="" type="checkbox"/> mm <input type="checkbox"/> inch
Linear	Angles	Chk. Kitty	Part no:
.X ±0.30	X' ±5°	Dr. Eddy	Dwg no:
.XX ±0.20	X' ±2°	Date. 2007.09.12	Scale 1:1
.XXX ±0.10	.XX' ±1°		Sheet 1/1
Projection			