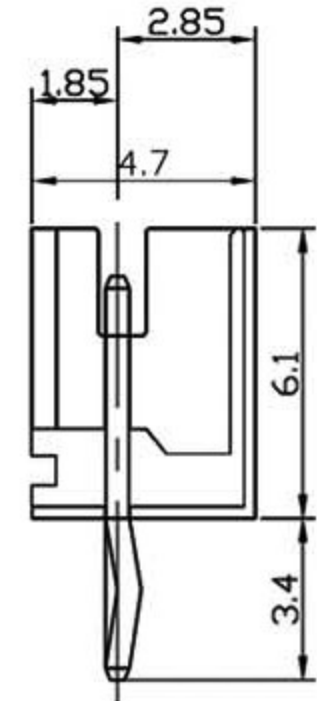
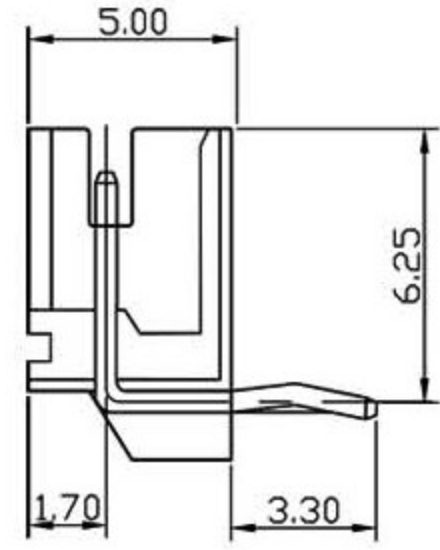
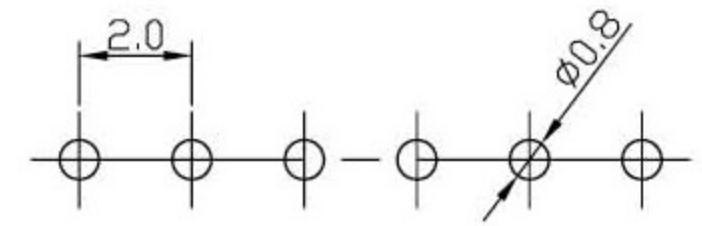
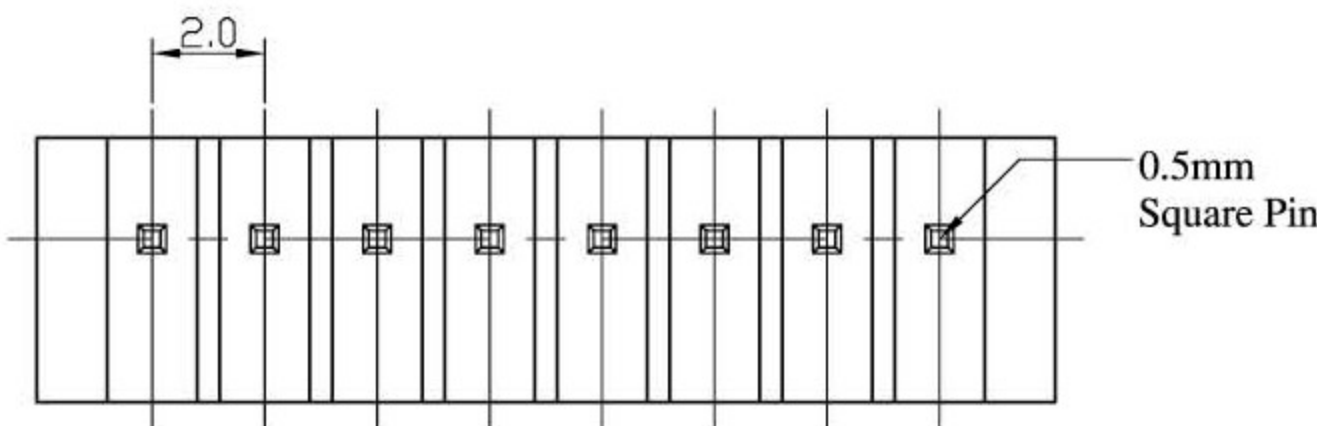
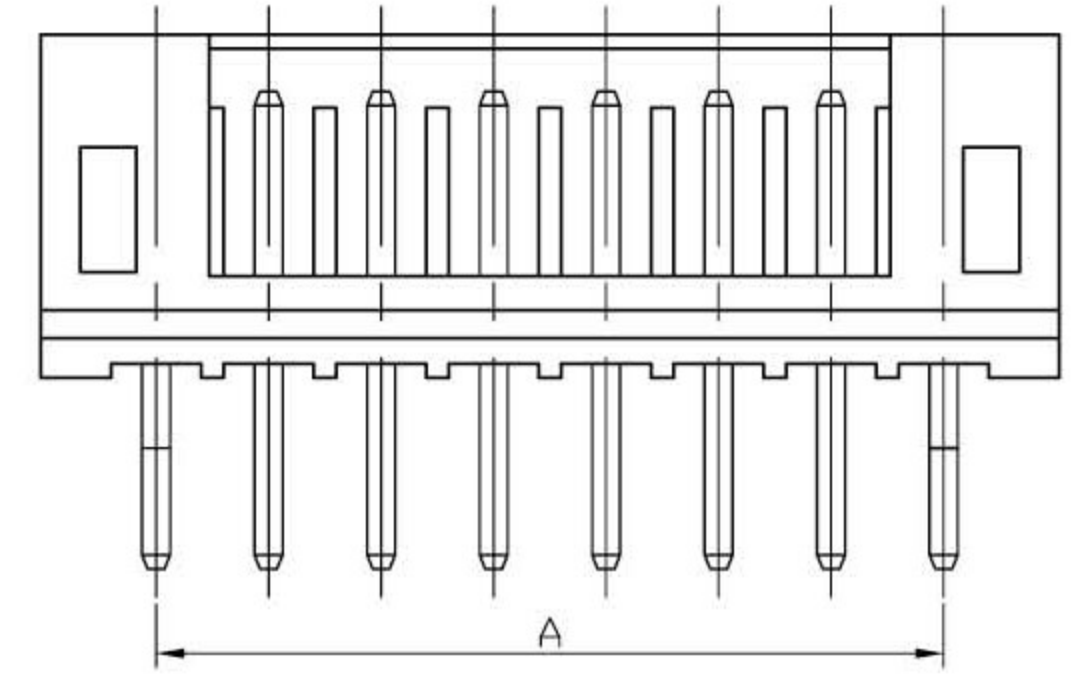
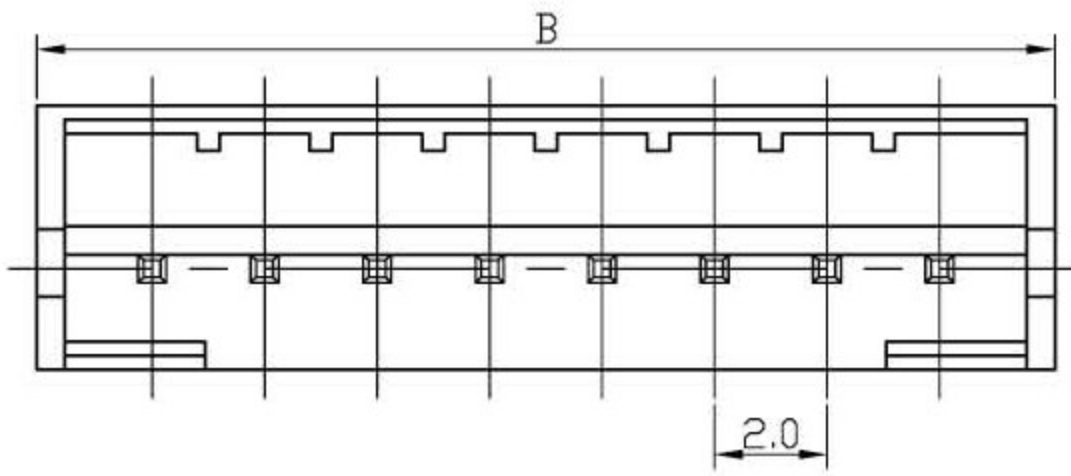


RoHS



Specifications

Electrical

- Voltage Rating: 100V(AC)
- Current Rating: 2A
- Contact Resistance: 20m Ω max.
- Dielectric Withstandeing Voltage: 800V AC/1min.
- Insulation Resistance: 1000m Ω min.

Material

- Circuits: 2~16
- Insulator: Nylon 66 UL 94V-0
- Color: White or Natural
- Contact: Brass 0.50mm(0.20") Square Pin
- Plating: Tin or Gold Plated
- Temperature Range: -25° C~+85° C
- Applicable PC Board Thickness: 0.8 to 1.6mm

Poles	Dimension mm (in.)	
	A	B
2	2.0(0.079)	6.1(0.240)
3	4.0(0.157)	8.1(0.318)
4	6.0(0.236)	10.1(0.397)
5	8.0(0.315)	12.1(0.476)
6	10.0(0.394)	14.1(0.555)
7	12.0(0.472)	16.1(0.634)
8	14.0(0.551)	18.1(0.713)
9	16.0(0.630)	20.1(0.791)
10	18.0(0.709)	22.1(0.870)
11	20.0(0.787)	24.1(0.949)
12	22.0(0.886)	26.1(1.028)
13	24.0(0.945)	28.1(1.106)
14	26.0(1.024)	30.1(1.185)
15	28.0(1.102)	32.1(1.263)
16	30.0(1.181)	34.1(1.343)

立原科技有限公司 Easy Show Technology Corp.		Title: wafer Pitch 2.0mm 90度 DIP Type	
Tolerances Linear: .X ±0.30, .XX ±0.20, .XXX ±0.10 Angles: X' ±5°, X' ±2°, .XX' ±1° Projection:		App. Dabbie Chk. Kitty Dr. Eddy Date. 2007.09.12	Units: <input checked="" type="checkbox"/> mm, <input type="checkbox"/> inch Size: A4 Scale: 1:1 Part no: Dwg no: Sheet: 1/1