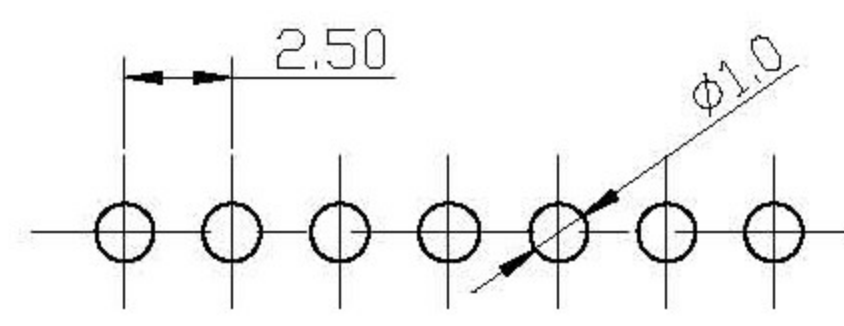
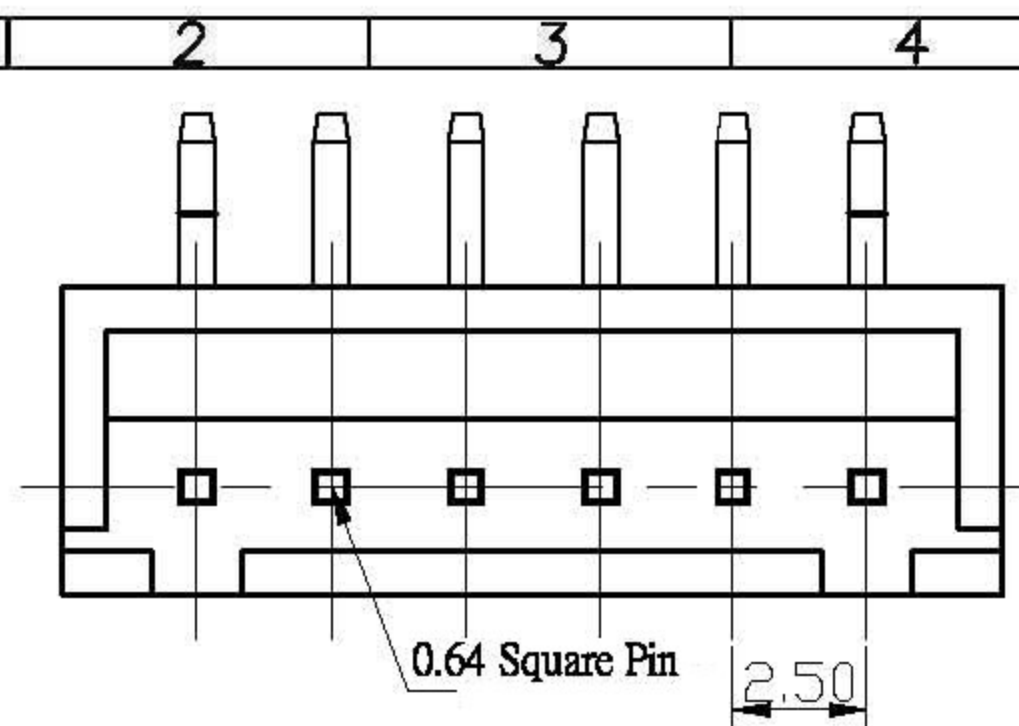


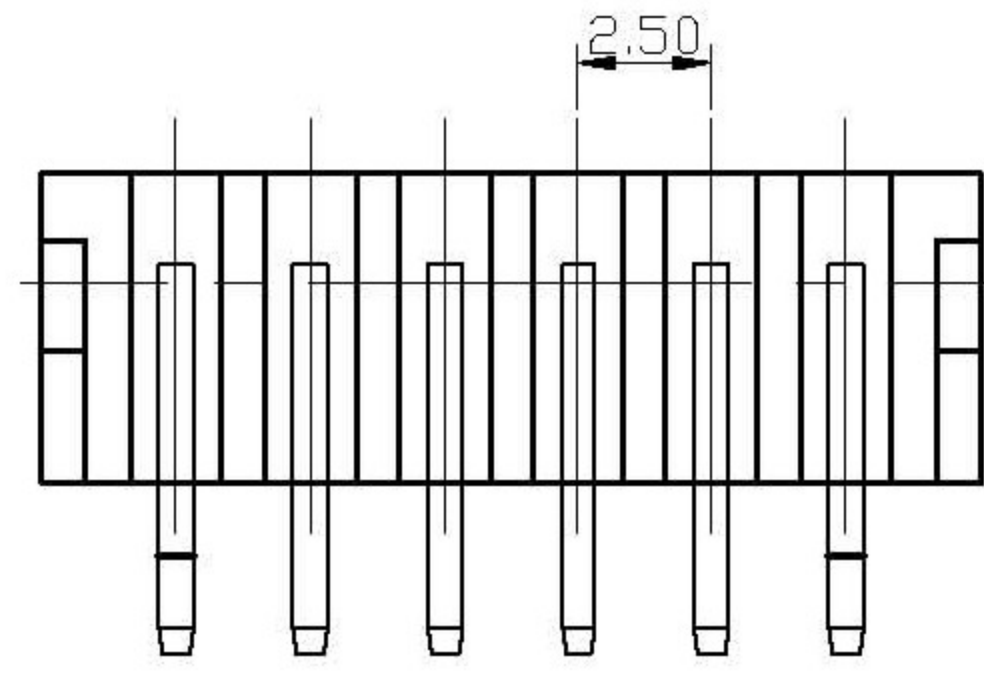
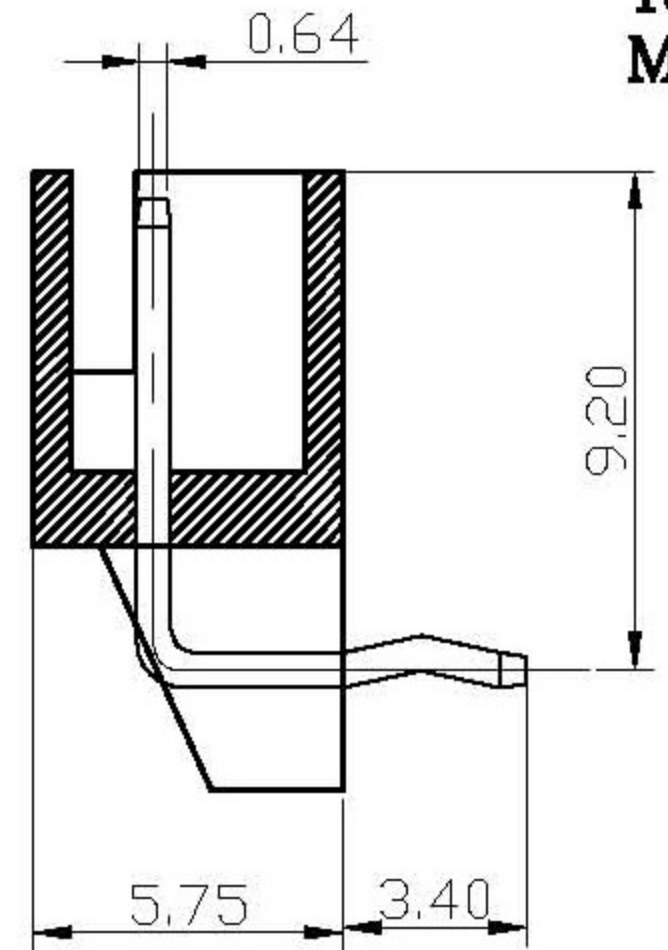
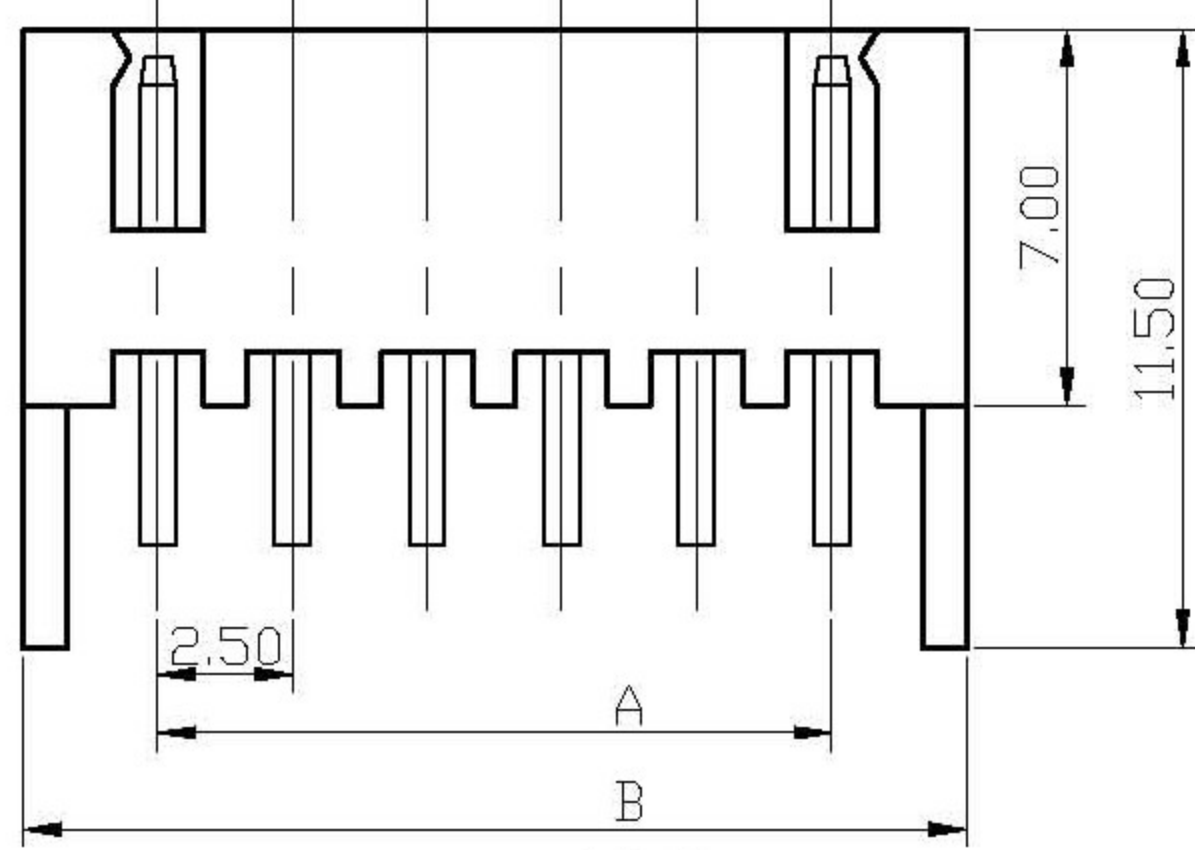
**RoHS**



RECOMMENDED  
P.C.BOARD HOLE DIMM.

**Specifications**

**Current Rating: 3A AC, DC**  
**Voltage Rating: 250V AC Maximum**  
**Operating Temp: -25°C ~ +85°C**  
**Contact Resistance: 10MΩ Max**  
**Insulation Resistance: 1000MΩ Min**  
**Terminal Material: Brass/Tin-plated**  
**Material: Nylon 66+GF, UL94V-0**



Poles	Dimension mm (in.)	
	A	B
2	2.50 (0.098)	7.50 (0.295)
3	5.00 (0.197)	10.00 (0.394)
4	7.50 (0.295)	12.50 (0.492)
5	10.00 (0.394)	15.00 (0.591)
6	12.50 (0.492)	17.50 (0.689)
7	15.00 (0.591)	20.00 (0.787)
8	17.50 (0.689)	22.50 (0.886)
9	20.00 (0.787)	25.00 (0.984)
10	22.50 (0.886)	27.50 (1.082)
11	25.00 (0.984)	30.00 (1.181)
12	27.50 (1.082)	32.50 (1.280)
13	30.00 (1.181)	35.00 (1.378)
14	32.50 (1.280)	37.50 (1.476)
15	35.00 (1.378)	40.00 (1.575)
16	37.50 (1.476)	42.50 (1.673)
17	40.00 (1.575)	45.00 (1.772)
18	42.50 (1.673)	47.50 (1.870)
19	45.00 (1.772)	50.00 (1.969)
20	47.50 (1.870)	52.50 (2.067)

立原科技有限公司 Easy Show Technology Corp.		Title: wafer Pitch 2.5mm 90度, DIP Type	
Tolerances		App. Dabbie	Units <input checked="" type="checkbox"/> mm <input type="checkbox"/> inch
Linear	Angles	Chk. Kitty	Part no:
.X ±0.30	X' ±5°	Dr. Eddy	Dwg no:
.XX ±0.20	X' ±2°	Date. 2007.09.12	Scale 1:1
.XXX ±0.10	.XX' ±1°		Sheet 1/1
Projection			