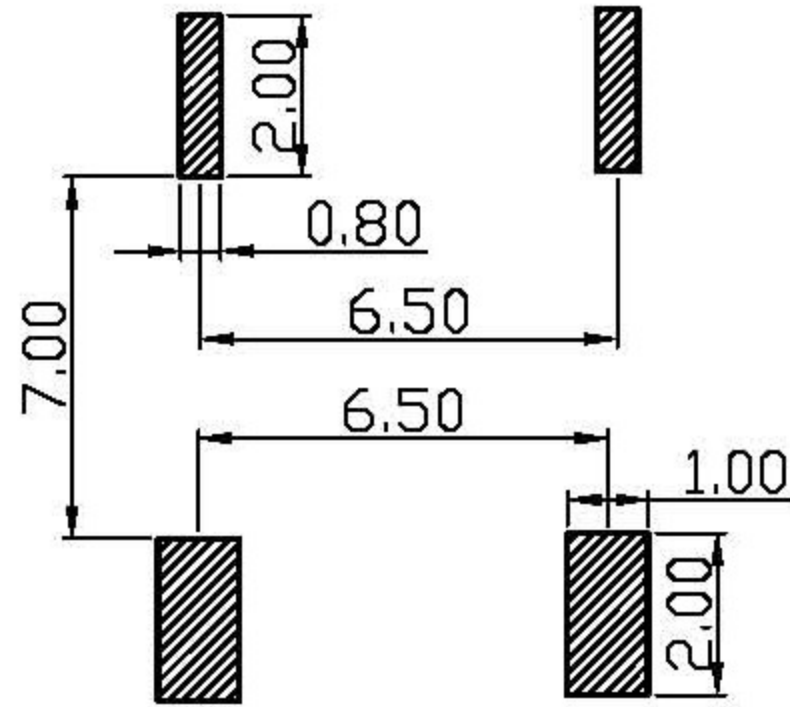
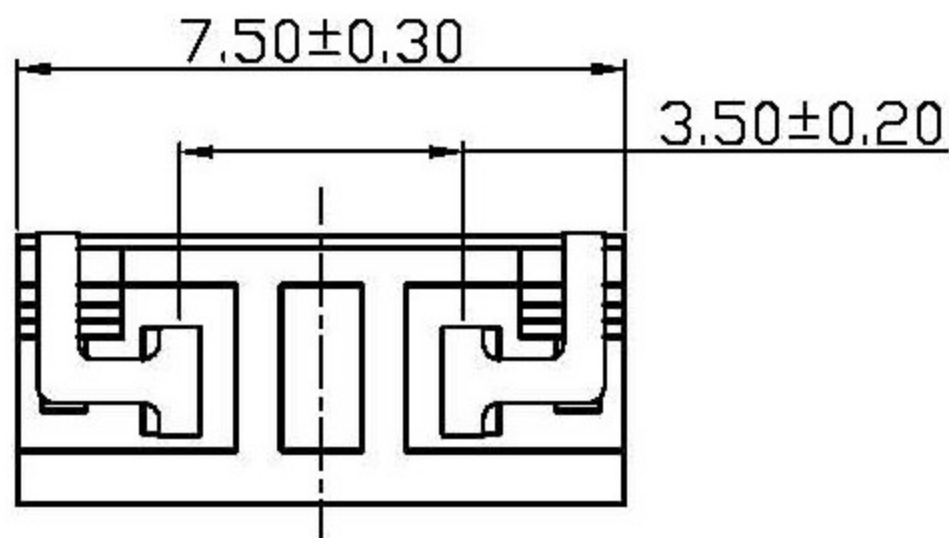


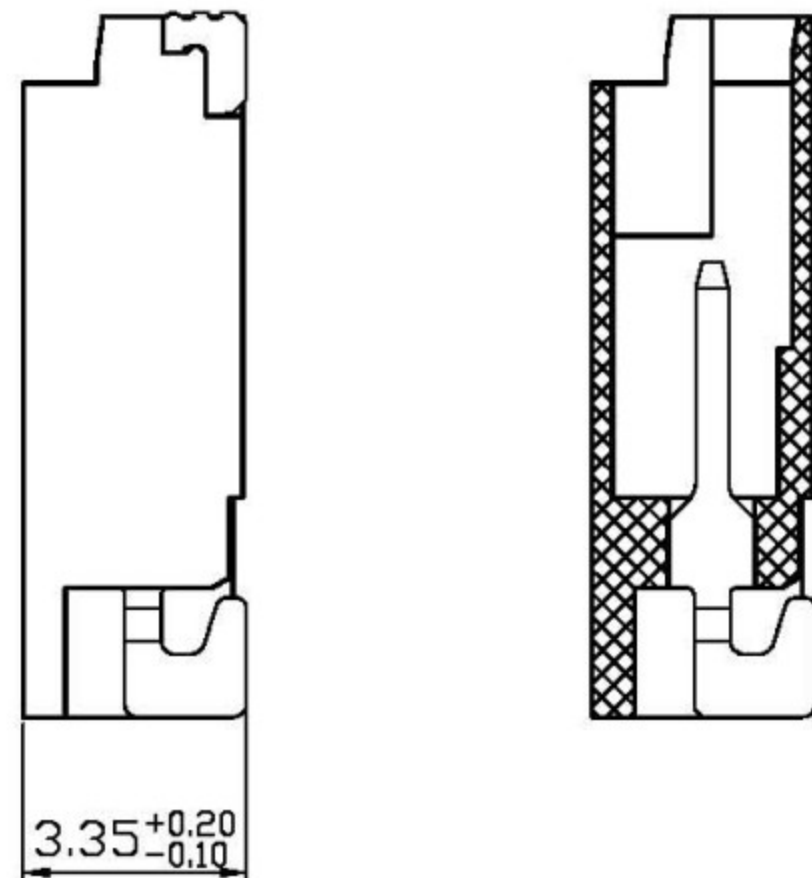
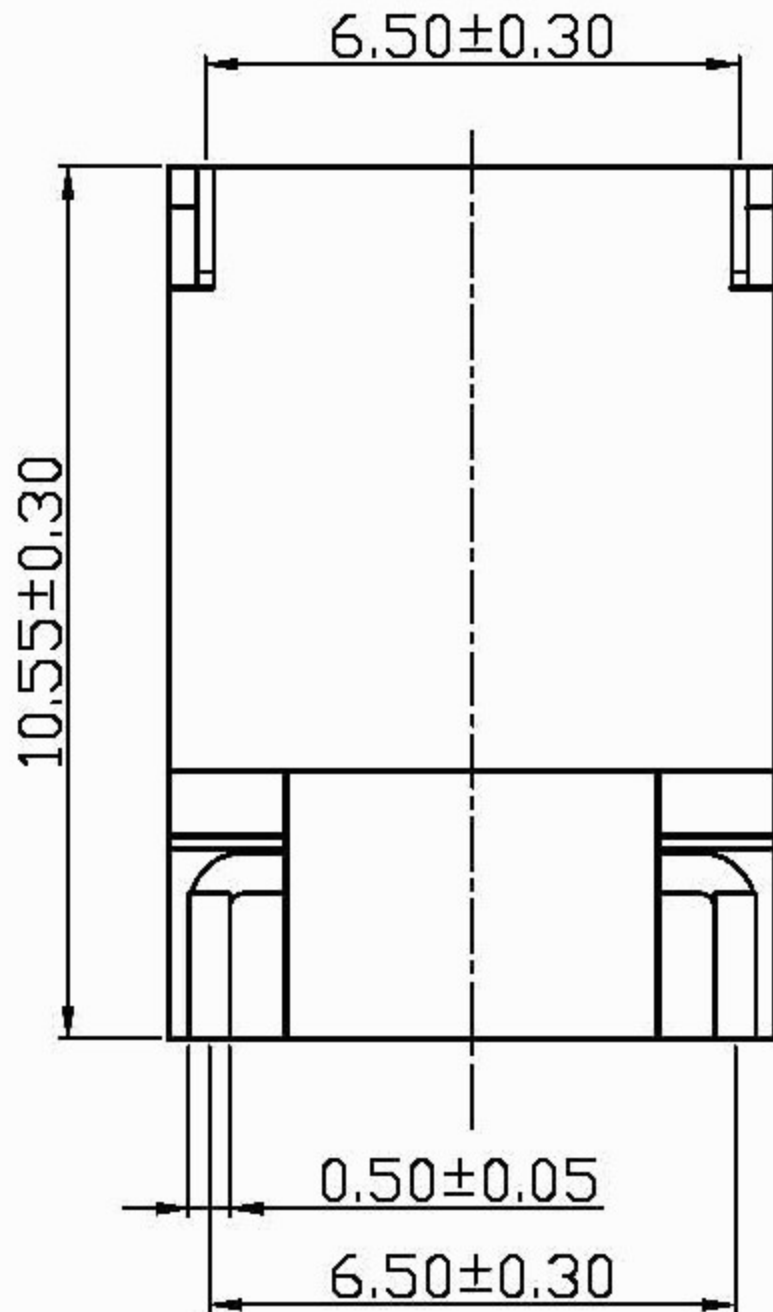
RoHS



PCB Layout

性能:

额定电流: 1.0A
 额定电压: 1400V
 耐电压: 3500V
 接触电阻: 30mΩ
 绝缘电阻: 1000MΩ
 工作温度: -25℃~+85℃
 塑件(材质): PA6T
 插簧(材质): 磷青铜, 镀锡
 焊片(材质): 磷青铜, 镀锡



PEC管理规定:

- 1、禁止使用含有SS-00259所限制的物质。
- 2、对应的SGS或ITS出具的ICP-AES数据、不可测定物质的成分表, 在一年有效期内。

立原科技有限公司
Easy Show Technology Corp.

Title:
wafer Pitch 3.5mm SMD Type

Tolerances		App.	Dabbie	Units	Part no:
Linear	Angles	Chk.	Kitty	<input checked="" type="checkbox"/> mm <input type="checkbox"/> inch	
.X ±0.30	X' ±5°	Dr.	Eddy	Size	Dwg no:
.XX ±0.20	X' ±2°	Date.	2007.09.12	A4	
.XXX ±0.10	.XX' ±1°			Scale	Sheet
Projection				1:1	1/1